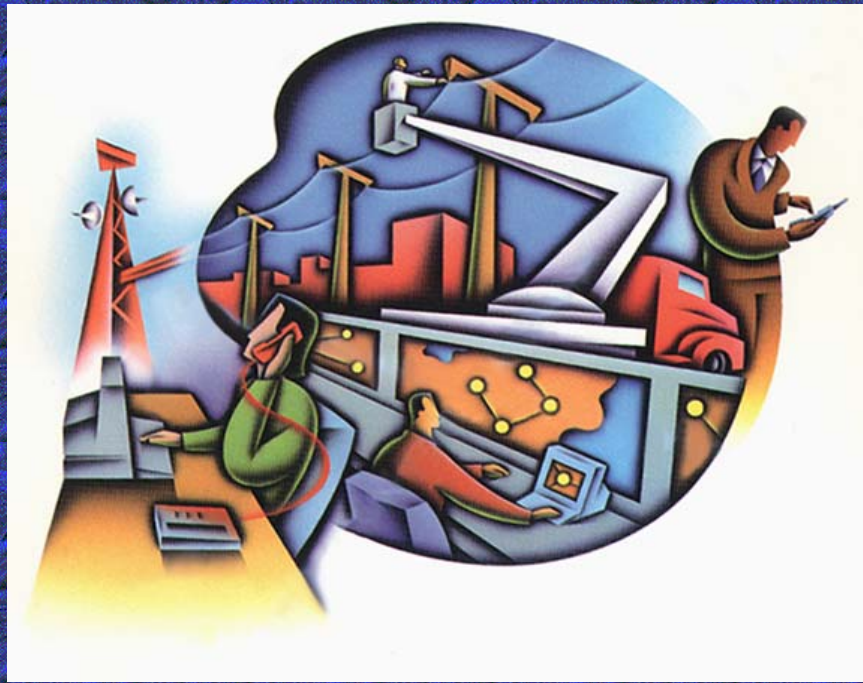


# INTELLIGENT NETWORK



# Network Knowledge Solutions<sup>SM</sup>

## Skills

- **Consulting**
  - Services Marketing
  - Business & Strategy Planning
  - Customer Care
  - Network Planning & Operations
  - Communications Security
- **Integration**
  - Network Node
  - Broadband CATV Network
  - Data Network
  - Telephony & Advanced Telephony
  - Internet
  - Information Systems
  - Voice Messaging
- **Operations**
  - Telecom

## Resources

Globally located for  
Planning, Integration and  
Operations



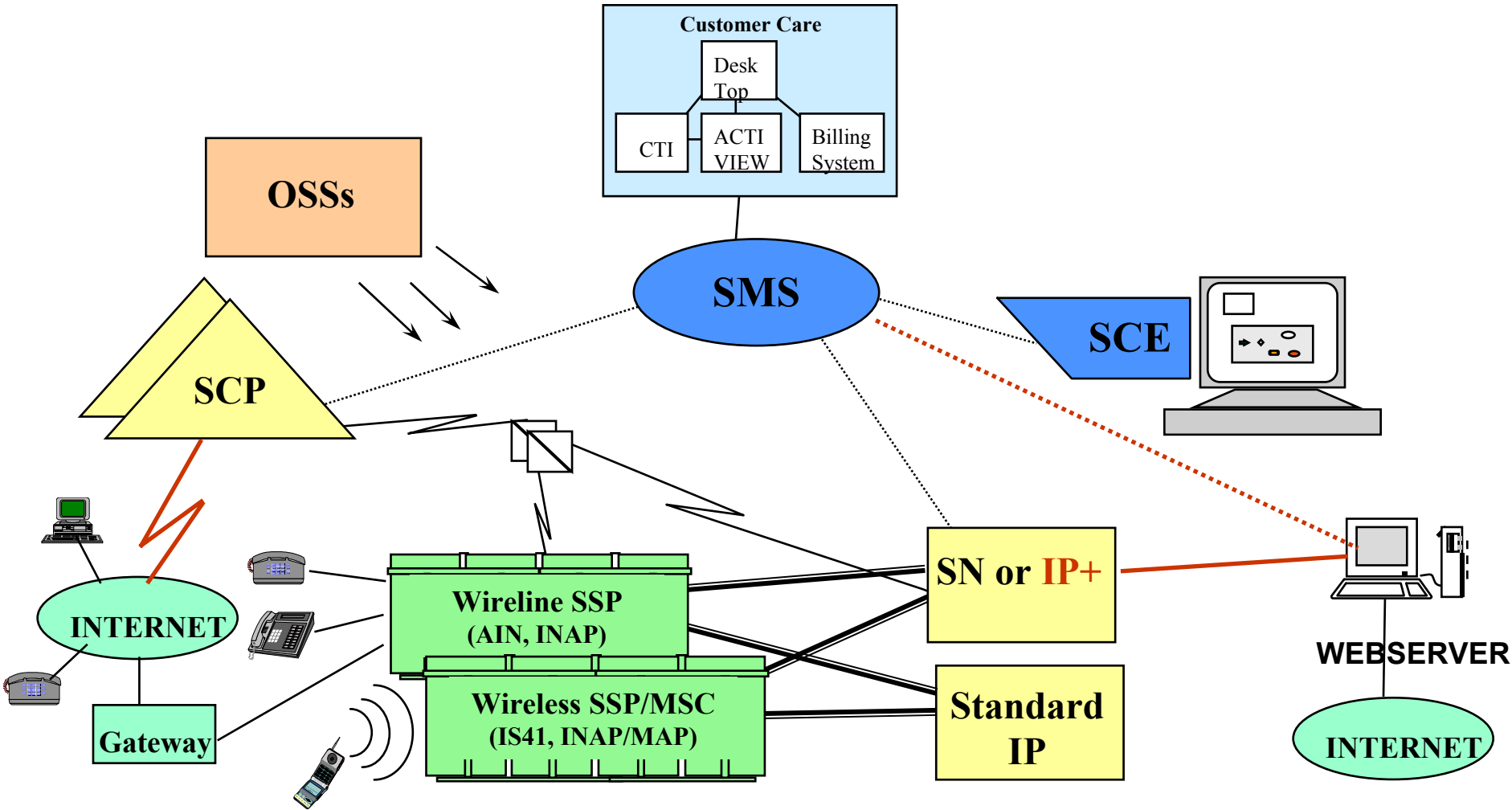
## Typical Projects

- Asia PTT Internet Arch. Consulting
- Telephony Integration for US and European CATV Companies
- IN Network Integration for European PTT
- ATM Planning for RBOCs & PTTs
- Broadband service trial for Canadian Carrier
- Data communications unit established in South America
- Internet Access Gateway Optimization for RBOC
- OS Integration/Consolidation for RBOC
- Network & Systems Integration for Major Middle Eastern PTT

## Partners

IBM	Claremont
Microsoft	Oracle
AT&T Solutions	Saville
Trinity	Tracom
Bechtel	

# Intelligent Networking





# ACCESS

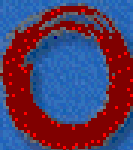
to Network Data and Logic

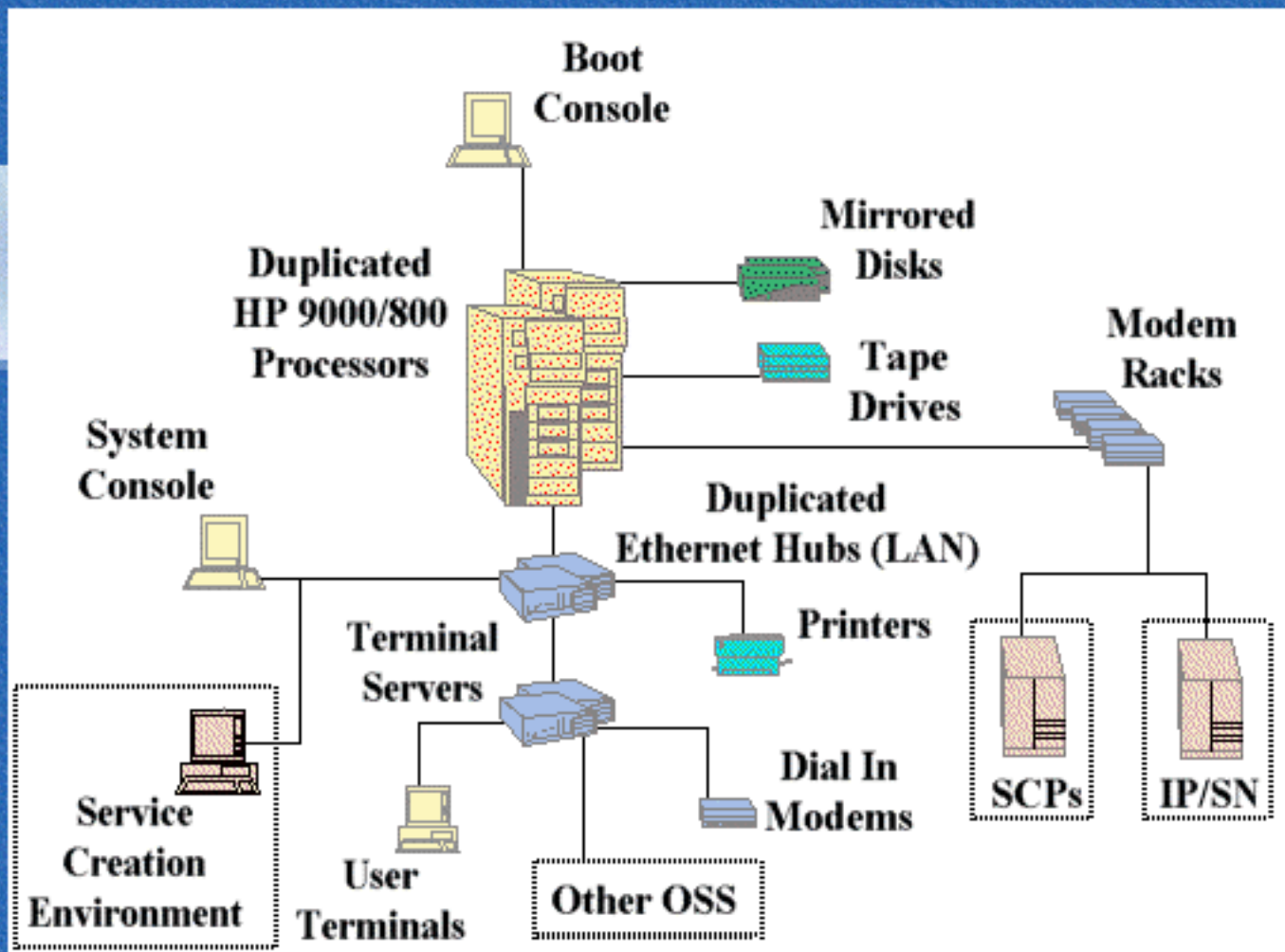
Manages large amounts of IN data and logic

Offers single entry point

Many secure ways to access data and logic

Satisfies end customer access needs





Menu



Lucent  
Technologies



**SCE**

## SCE

Service Creation Environment (SCE)

Gives network providers the capability to create, modify, and test Intelligent Network services.

**STP**

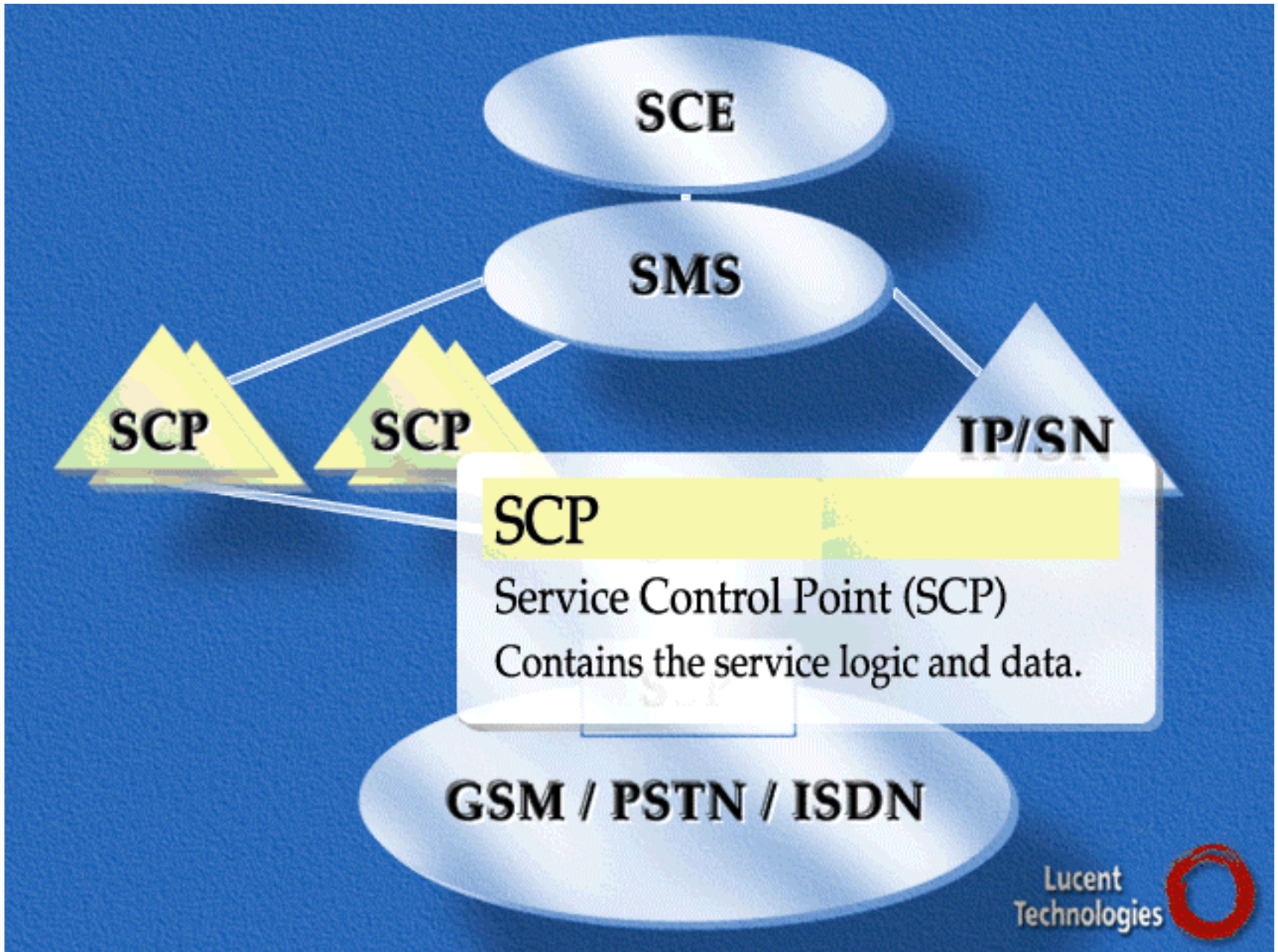
**SSP**

**GSM / PSTN / ISDN**

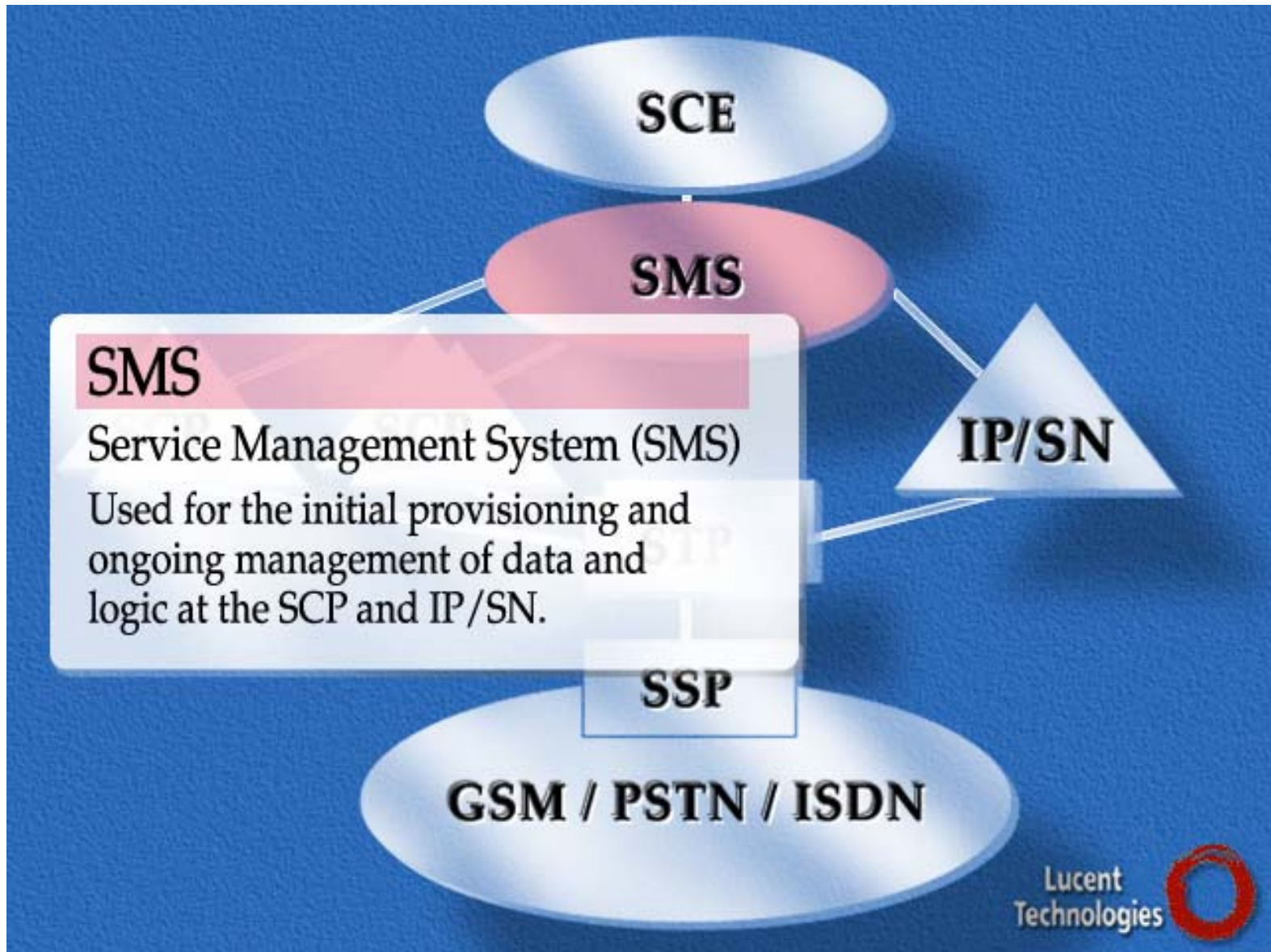
**IP/SN**

Lucent  
Technologies









**SCE**

**SSP**

**Service Switching Point (SSP)**

Recognizes IN calls, queries the SCP for more information regarding the call, and then executes the instructions returned from the SCP.

**IP/SN**

**SSP**

**GSM / PSTN / ISDN**

Lucent  
Technologies



**SCE**

## STP

Service Transfer Point (STP)

Provides Signaling System 7 protocol, inter-network gateway, and network surveillance and maintenance.

**IP/SN**

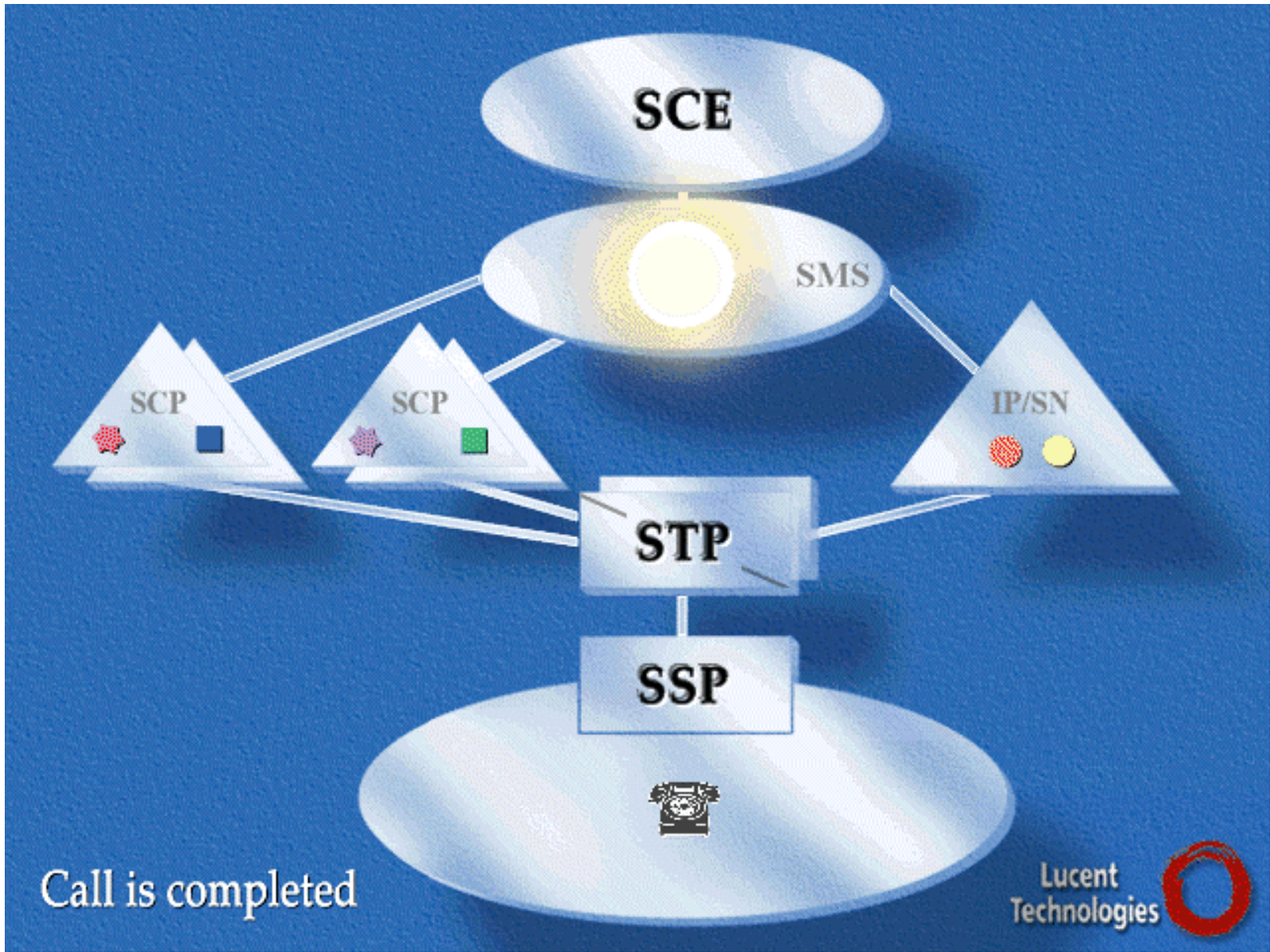
**STP**

**SSP**

**GSM / PSTN / ISDN**

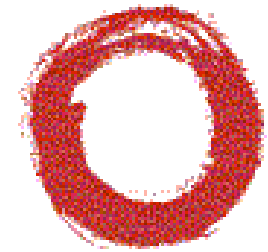
Lucent  
Technologies







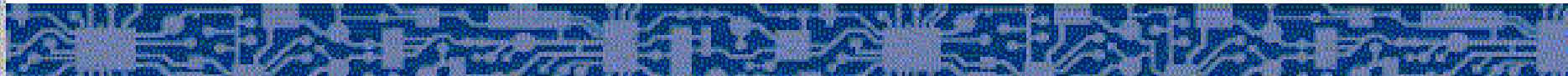
**Lucent Technologies**  
Bell Labs Innovations



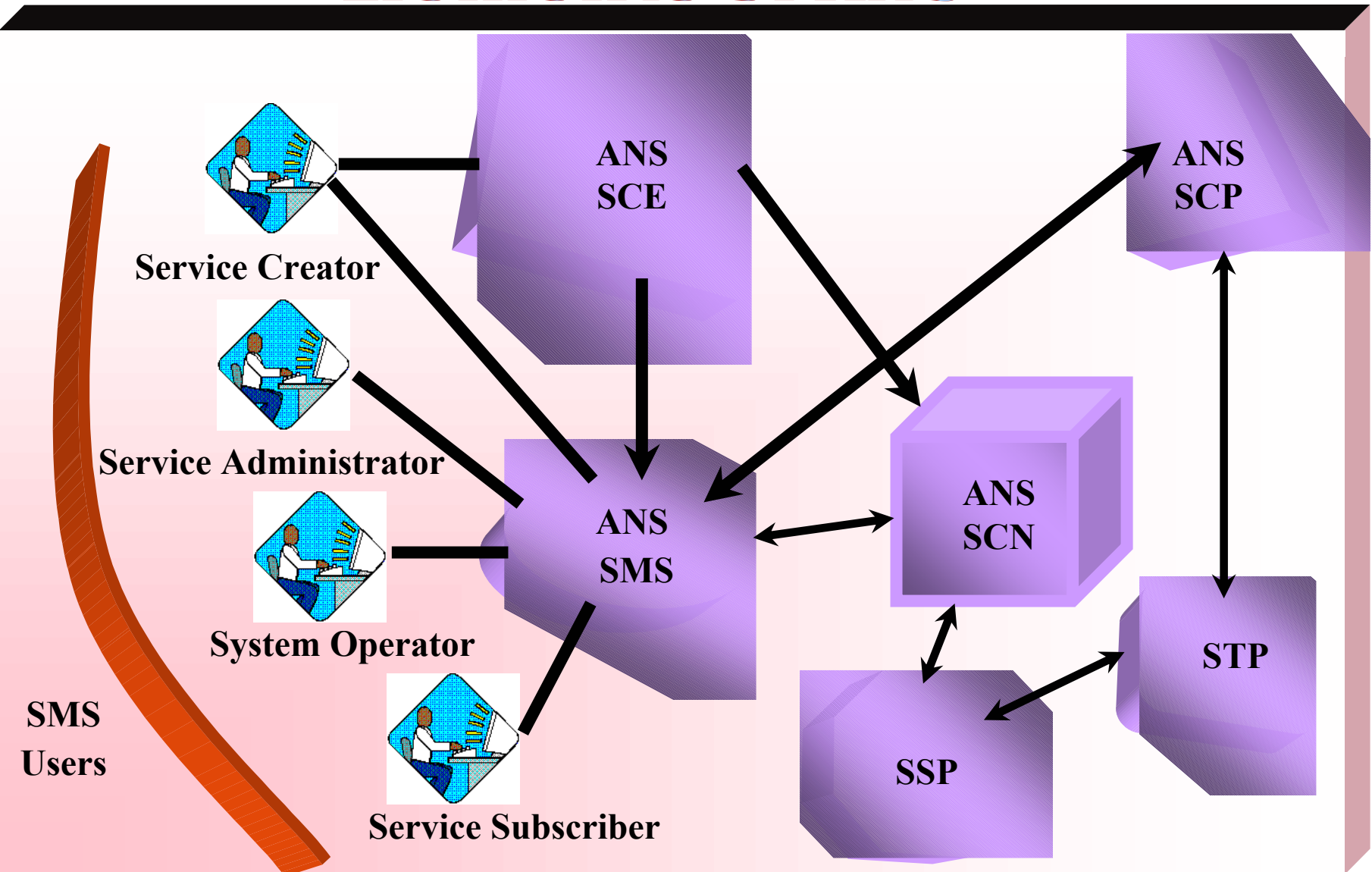
**SMS**

Service Management System

Copyright © 1997  
Lucent Technologies.  
All rights reserved.



# Elements of ANS



# Service Packages and Subscribers





# Subscribable Services

**An SP consists of one or more subscribable services.**

**Examples are:**

- **Automatic Number Identification (ANI)**

**Security**

- **Multi-Location Extension Dialing**

- **Incoming Call Screening**



# Service Package Data

## Introduction

SPs can be structured in a variety of ways, allowing flexibility in meeting subscriber needs.



# SMS DATA ADMINISTRATION

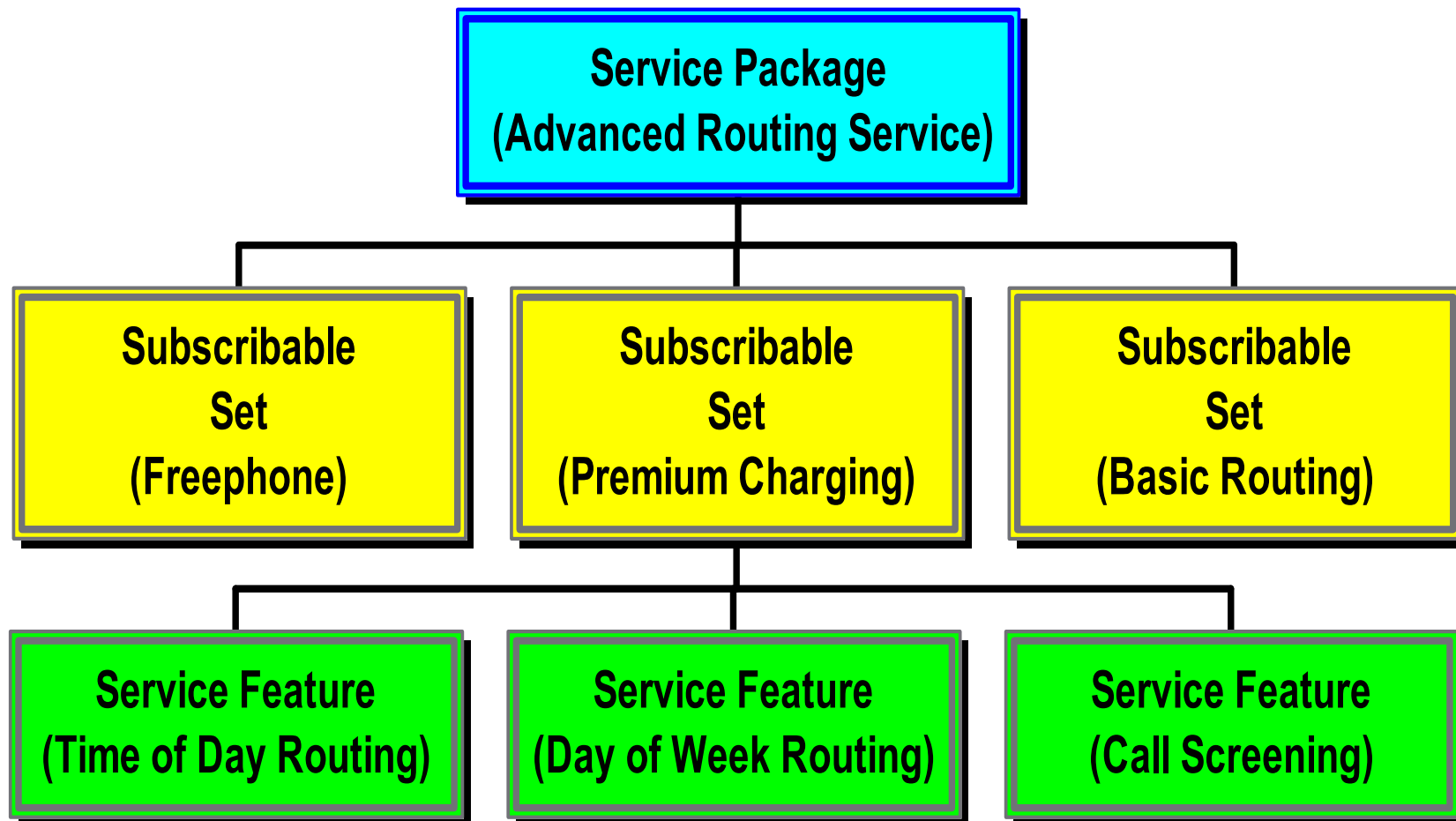


Figure 1-3 SP Services and Features

# DECISION GRAPHS

Service EDGE [V 1.0] - jmarks\_dg

File Edit View Options Mode Help

Node Types

Algorithm	CONNECT
Case	Charge_Record
Charge_Send_Info	ComeInto
Comparison	Continue
DataAssign	Date
Disconnect_Resource	DistributeByPercent

Map Tool

Path To Child: Root -Start-> Comparison

Root

Comparison

Compare Object: Subscriber\_Data

Reference Object: 'true'

Child Branch Label: Error

Child Branch Label: =

Child Branch Label: <>

Next Branch: Del Cycle Add:

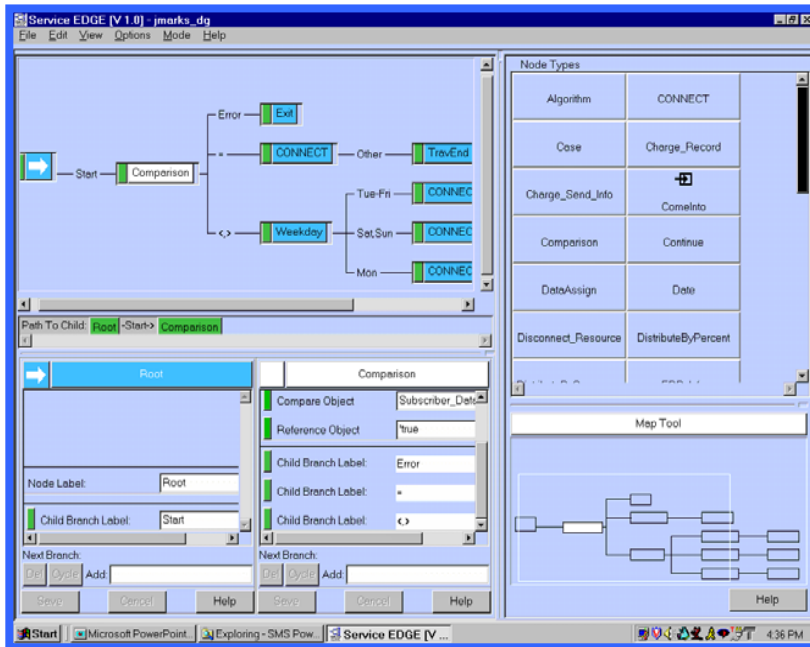
Next Branch: Del Cycle Add:

Save Cancel Help

Start Microsoft PowerPoint Exploring - SMS Pow... Service EDGE [V ...] 4:36 PM

A decision graph is a visual representation of service logic which can be customized for a subscription or service and distributed to SCP(s) by SMS.

# DECISION GRAPHS



**Decision Graphs -- DGs determine call treatments based on call parameters and other subscriber data. The DG is a set of nodes at which:**

- **A decision is made regarding call processing logic flow**
- **An action is taken in call processing logic.**

**Each node represents a request for a call processing resource or a logical decision.**

**DGs are optional. Not all SPs have DGs.**

# Global Partitions



**Global partitions hold data that is used by any or all of the subscribers in the SP. Only designated SMS administrators can work with the data in global partitions.**

# Subscriber Partitions



**Subscriber partitions hold data for specific customers in an SP. Users in different subscriber groups cannot look at or access each others' data. Subscriber-specific data can be accessed only by the authorized subscriber, and authorized SMS Administrators.**

# Partitions

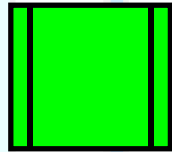
## Global Partition

## Subscriber Partition

### Service Instance A



Pending Views

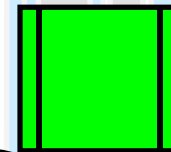


Active View

### Subscriber Group B



Pending Views

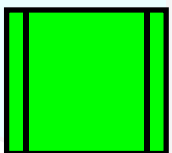


Active View

### Service Instance B



Pending Views

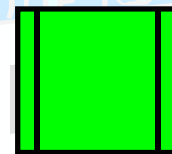


Active View

### Subscriber Group A



Pending Views



Active View

# SMS PCGUI PENDING VIEWS

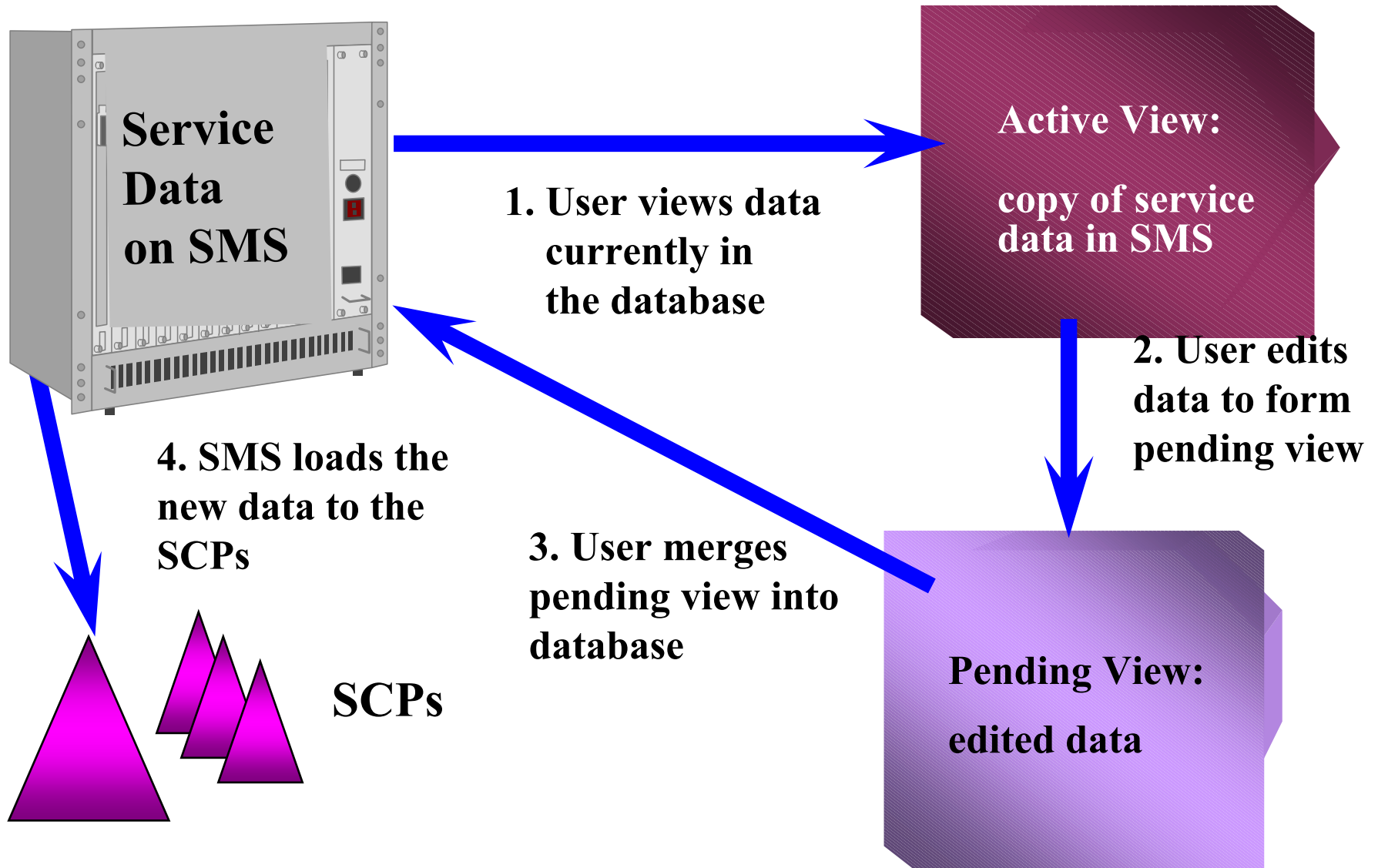
The screenshot displays the SMS PCGUI interface. On the left, the 'ANS SMS Explorer' tree shows the hierarchy: ANS SMS > SMS Administrator > BSLDCC710 > 0GLOBAL0 > dw1. The main window is titled 'Service Management System' and has a menu bar (File, Edit, View, Window, Help). The 'Pending Views' tab is active, showing a table with the following data:

View Name	Global Status	Override Indicator
V101	Merged	Independent

Below the table are buttons for 'Create', 'Copy', and 'Delete'. The status bar at the bottom reads 'SMS Administrator BSLDCC710 0GLOBAL0 dw1'.

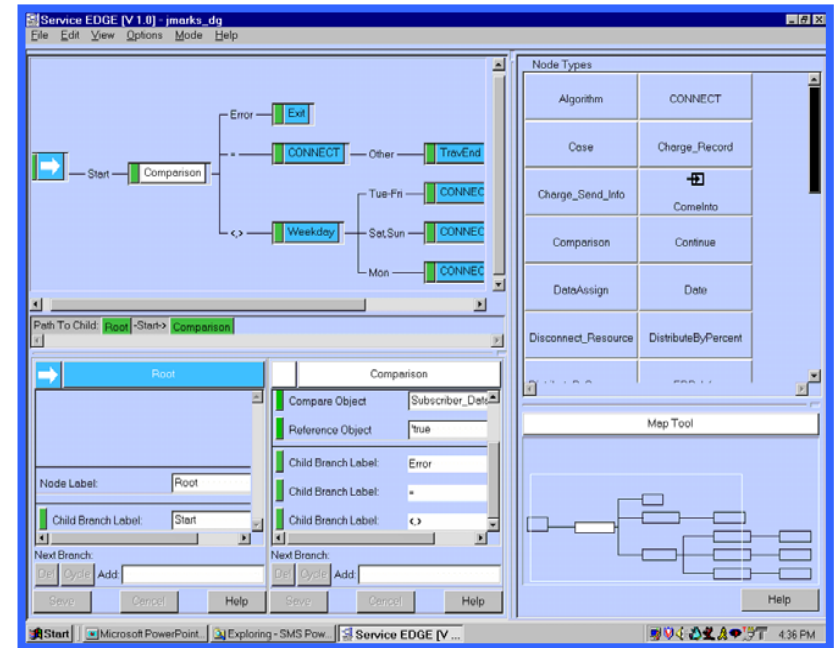


# Provisioning Flow



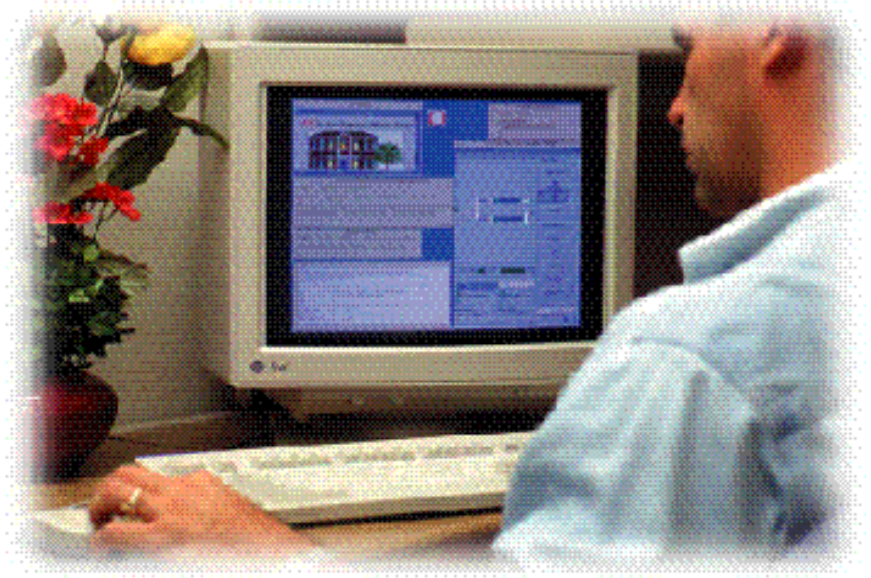
# Decision Graphs

- Decision Graphs may be loaded to the SCP if they have been amended in-line with the service data
- If they are loaded together with the data, this is called **CO-ORDINATED LOADING**



# Decision Graphs

- Decision Graphs may be loaded to the SCP if they have been amended in-line with the service data
- If they are loaded together with the data, this is called **CO-ORDINATED LOADING**



# Initial Service Set Up

## GSI Process Flow

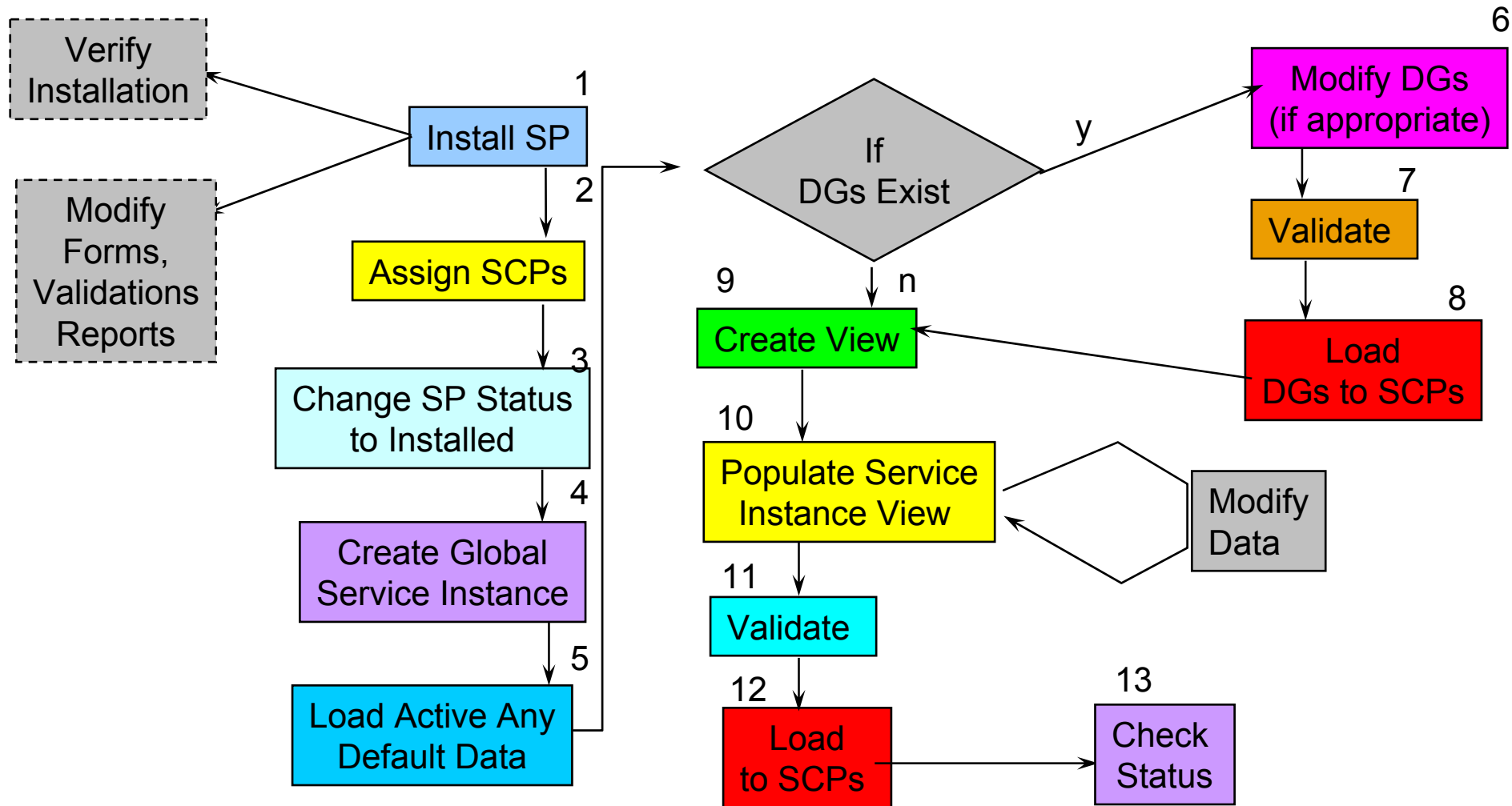


Figure 1-6

# Process Flow for the SSI

This table describes a high-level process flow in [Figure 1-7](#) for working in an SSI, if one exists for the SP.

Step	Description
1	Access to the SSI environment
2	Creation of SSI if necessary
3	Validation of DGs if modified
4	Loading of DGs if present
5	Creation of a Pending View for the SSI
6	Population/editing of the View for the SSI
7	Validation of Pending View
8	Distribution of Pending View to NEs
9	Status check for verification of merge

# Working With Subscriber Data

## SSI Process Flow

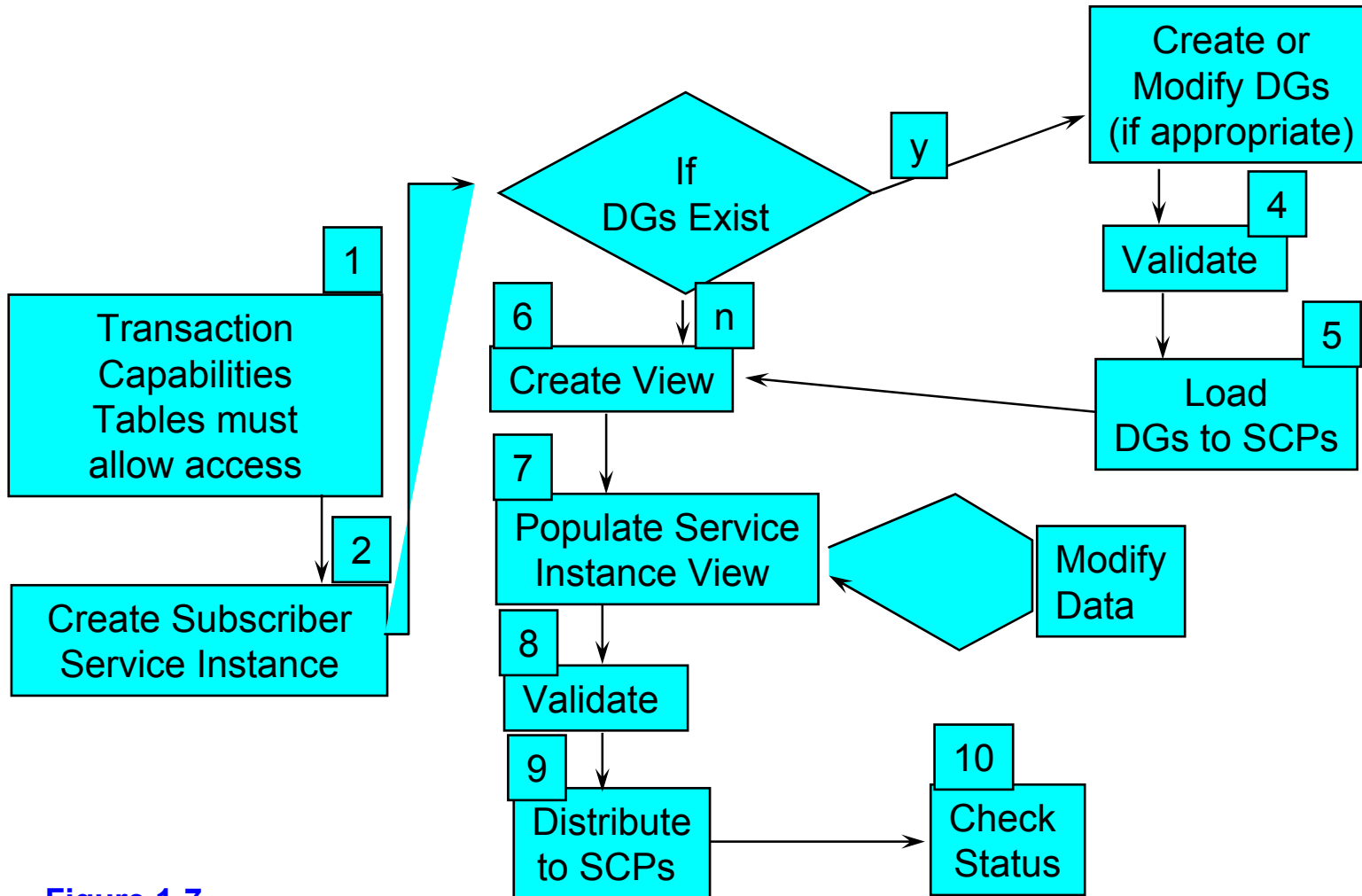


Figure 1-7

# High Level View of Installation and Provisioning

**Install SP from SCE**



**Create Global Service Instance**



**Create Subscriber Service Instance**



**Monitor Service as Needed**

- **Installation procedures produce SP “under test”**
- **Attach customization - forms, validations, reports**
- **Configure SP parameters (ex: max records)**
- **Assign SCPs**

- **Create Pending View**
- **Edit Decision Graphs, Validate, Send**
- **Populate table records**
- **Validate and Send Pending View**

- **Create Pending View**
- **Edit Decision Graphs, Validate, Send**
- **Populate table records**
- **Validate and Send Pending View**

- **Repeat steps of View creation, population, validation, and sending**
- **Request reports**
- **Request service audits**

# The End